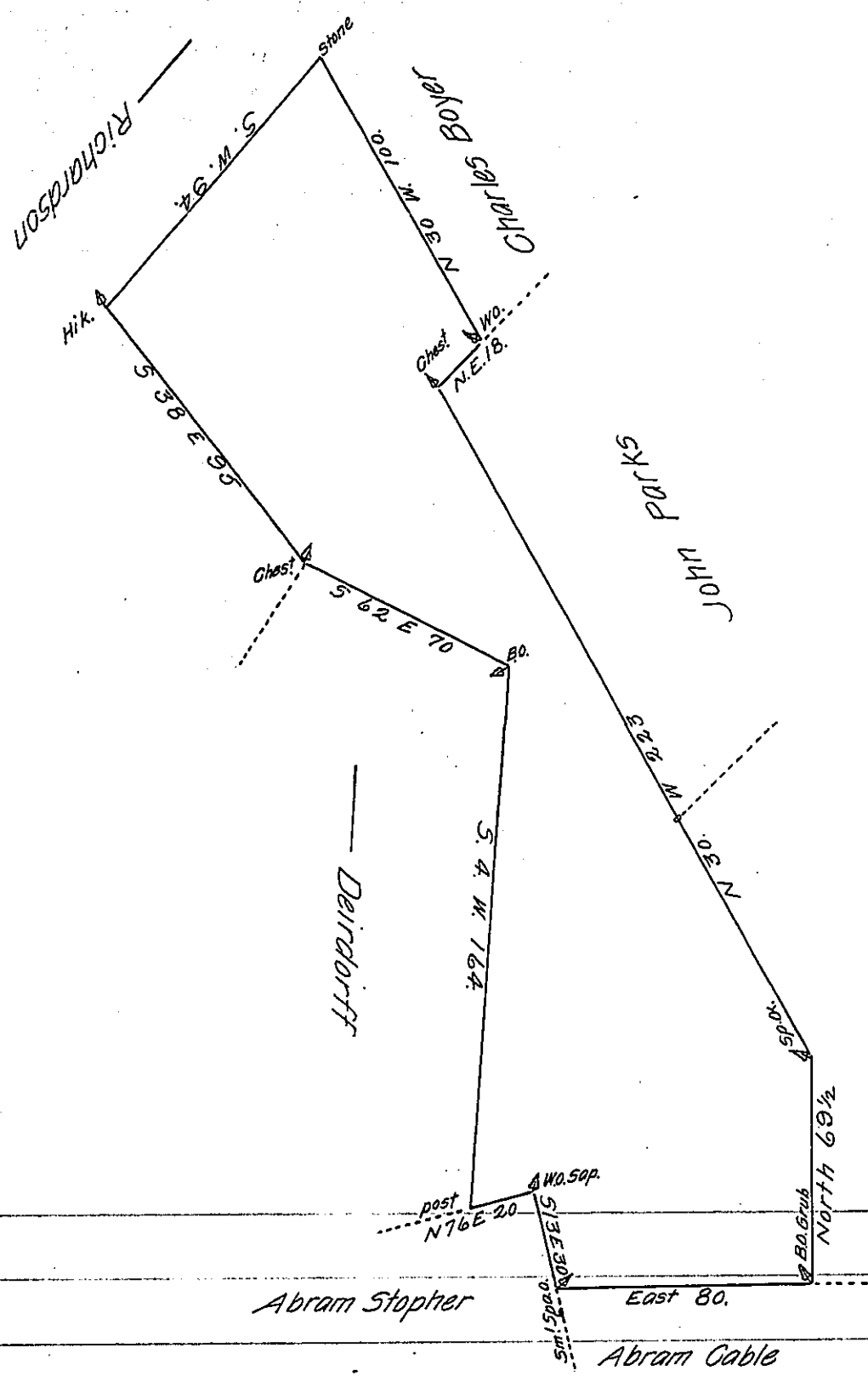


FORM NO. 1.



A Draught of a Tract of Land situate in — Township in the County of York
 Surveyed unto Jn^o Miller in pursuance of an Application N^o — dated the
 — day of — 17 — Called — Containing —
 R. Cha^s Lukens D.S.
 To John Lukens Esq^r Surveyor General

IN TESTIMONY that the above is a copy of the original remaining on file in
 the Department of Internal Affairs of Pennsylvania, made
 conformably to an Act of Assembly approved the 16th day of
 February 1833, I have hereunto set my hand and caused
 the Seal of said Department to be affixed at Harrisburg,
 this fourth day of March 1907.

Geo. P. ...
 Secretary of Internal Affairs.